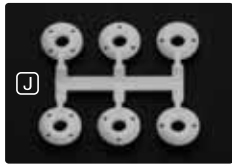
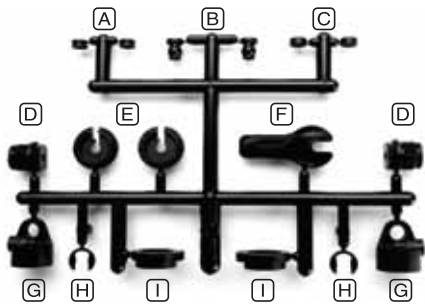


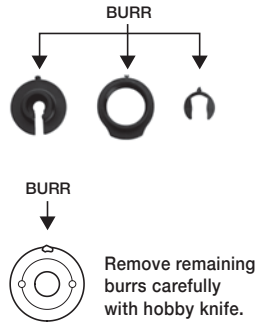
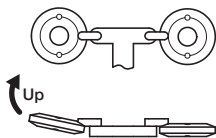
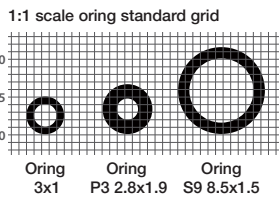
# Aeration shock assembly instructions



## Step 1

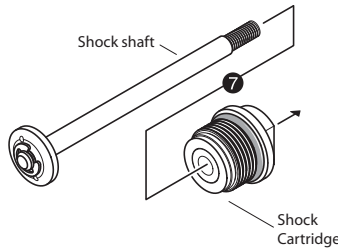
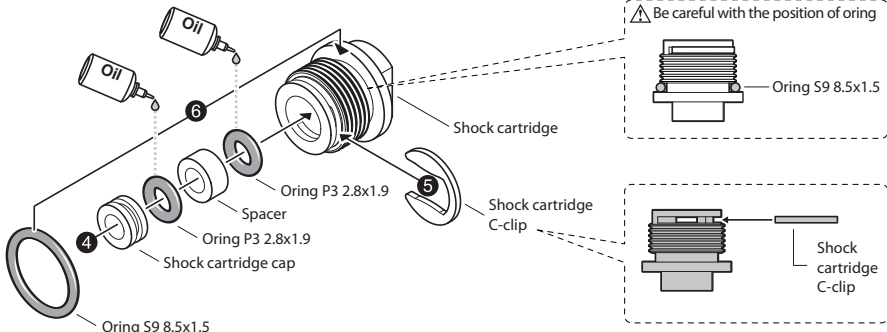
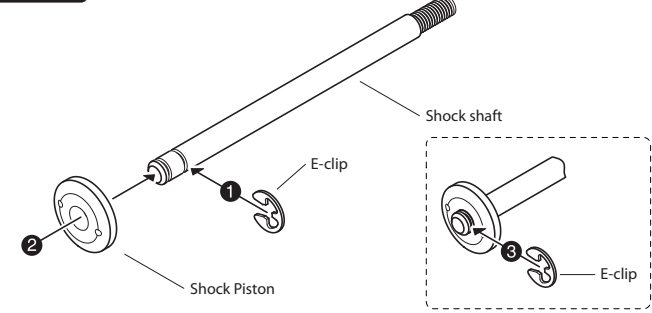


- A Shock cartridge cap
- B Shock cap bushing
- C Spacer
- D Shock cartridge
- E Spring cup
- F Tool
- G Shock cap
- H Shock cartridge C-clip
- I Shock adjustment nut
- J Shock piston



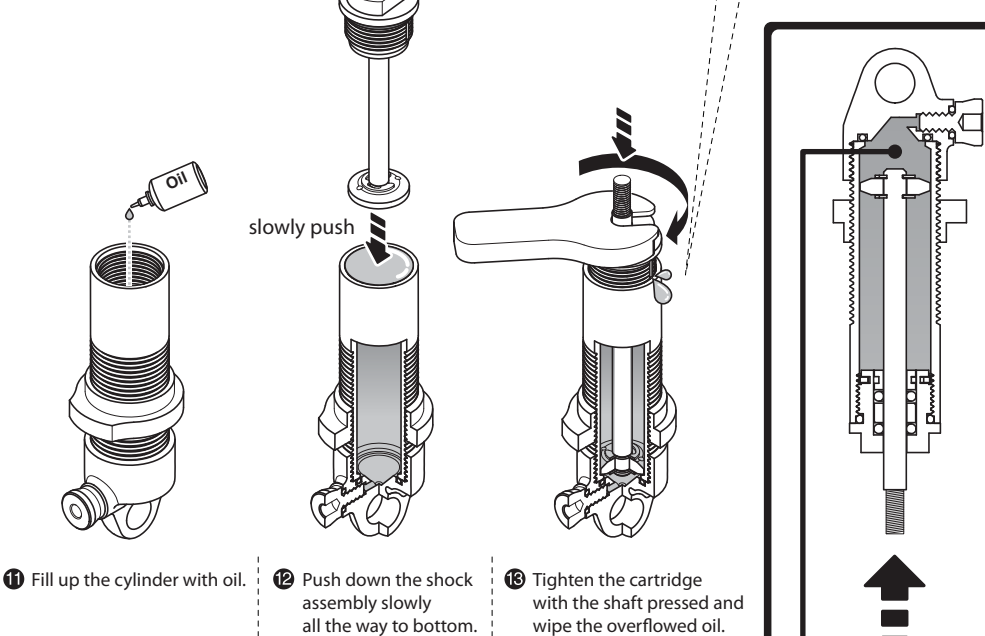
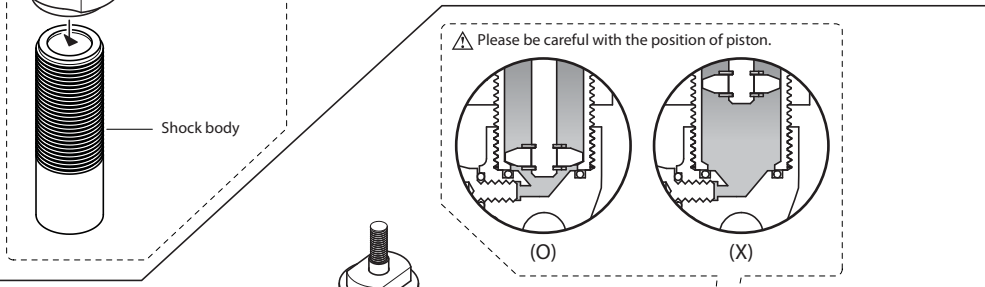
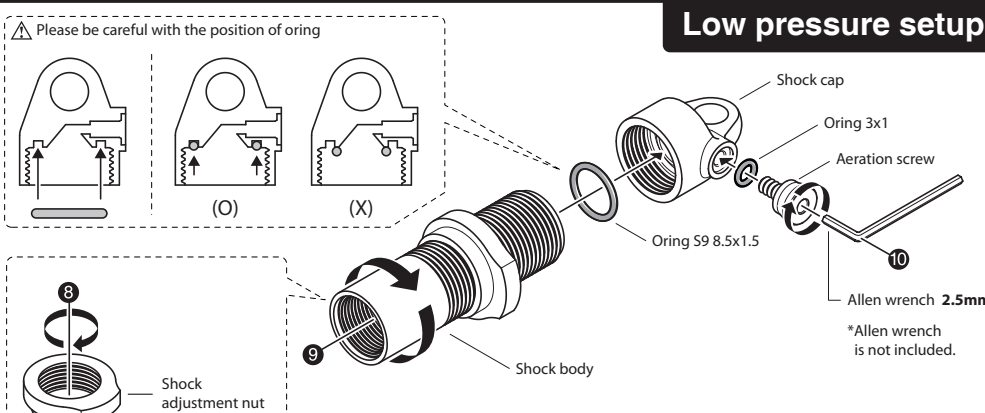
Good!!

## Step 2



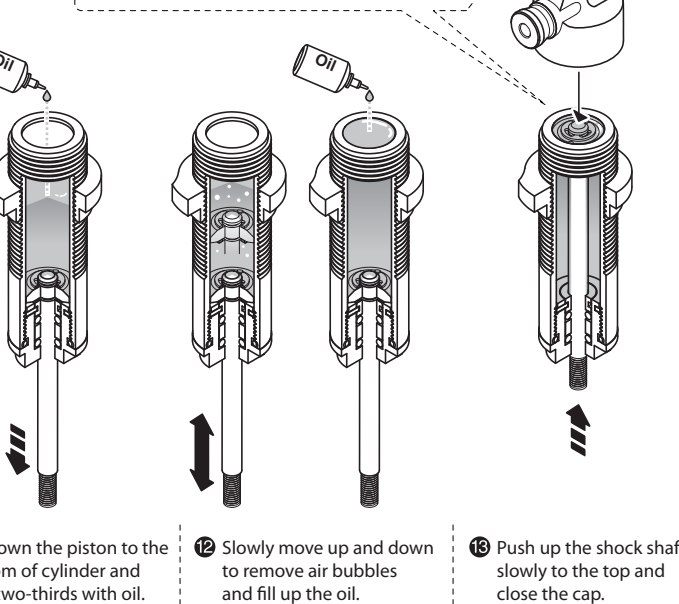
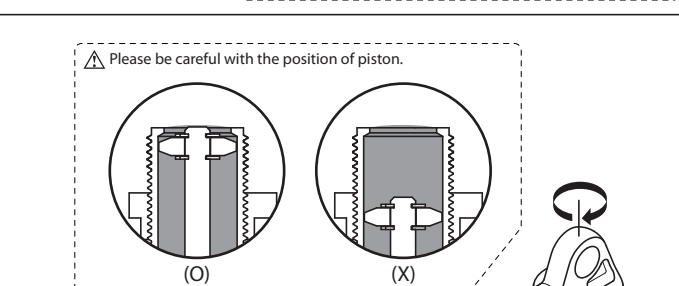
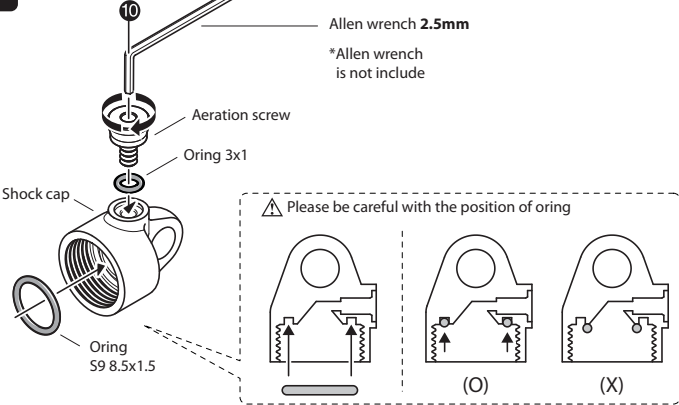
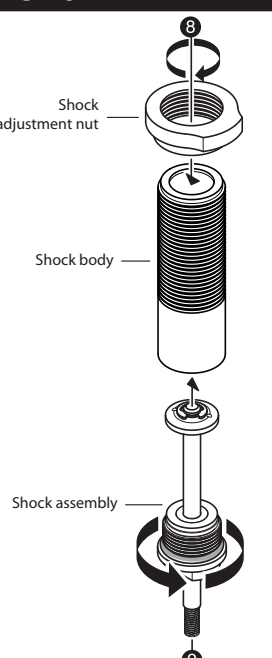
## Step 3

### Low pressure setup



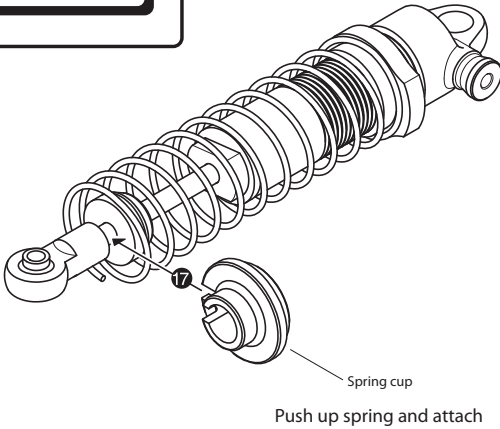
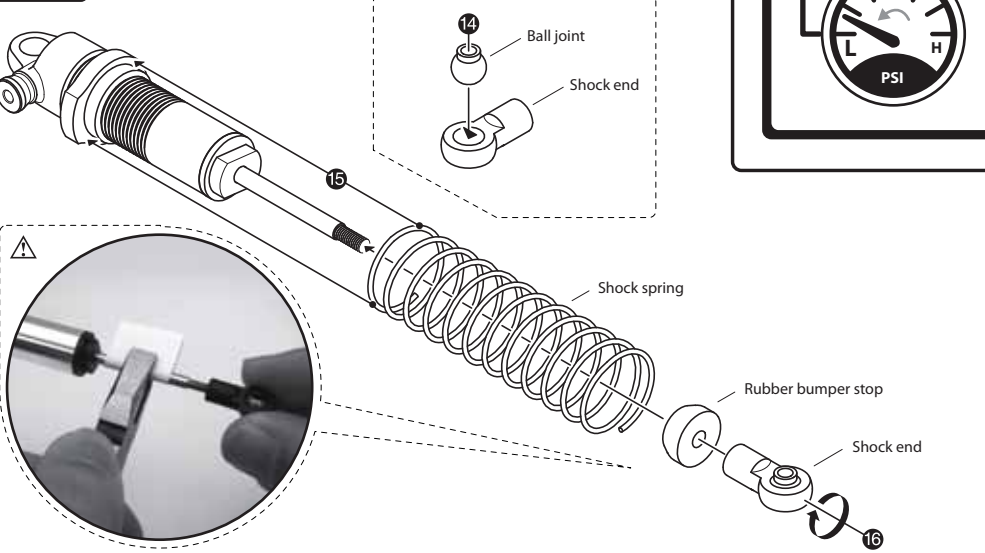
- 11 Fill up the cylinder with oil.
- 12 Push down the shock assembly slowly all the way to bottom.
- 13 Tighten the cartridge with the shaft pressed and wipe the overflowed oil.

### High pressure setup



- 11 Pull down the piston to the bottom of cylinder and fill it two-thirds with oil.
- 12 Slowly move up and down to remove air bubbles and fill up the oil.
- 13 Push up the shock shaft slowly to the top and close the cap.

## Step 4



Video manual  
[www.gmade.net](http://www.gmade.net)

For any inquiry or detailed assembly explanation, Please visit our Gmade website.

GMADE  
[www.gmade.net](http://www.gmade.net)

Made in Korea